

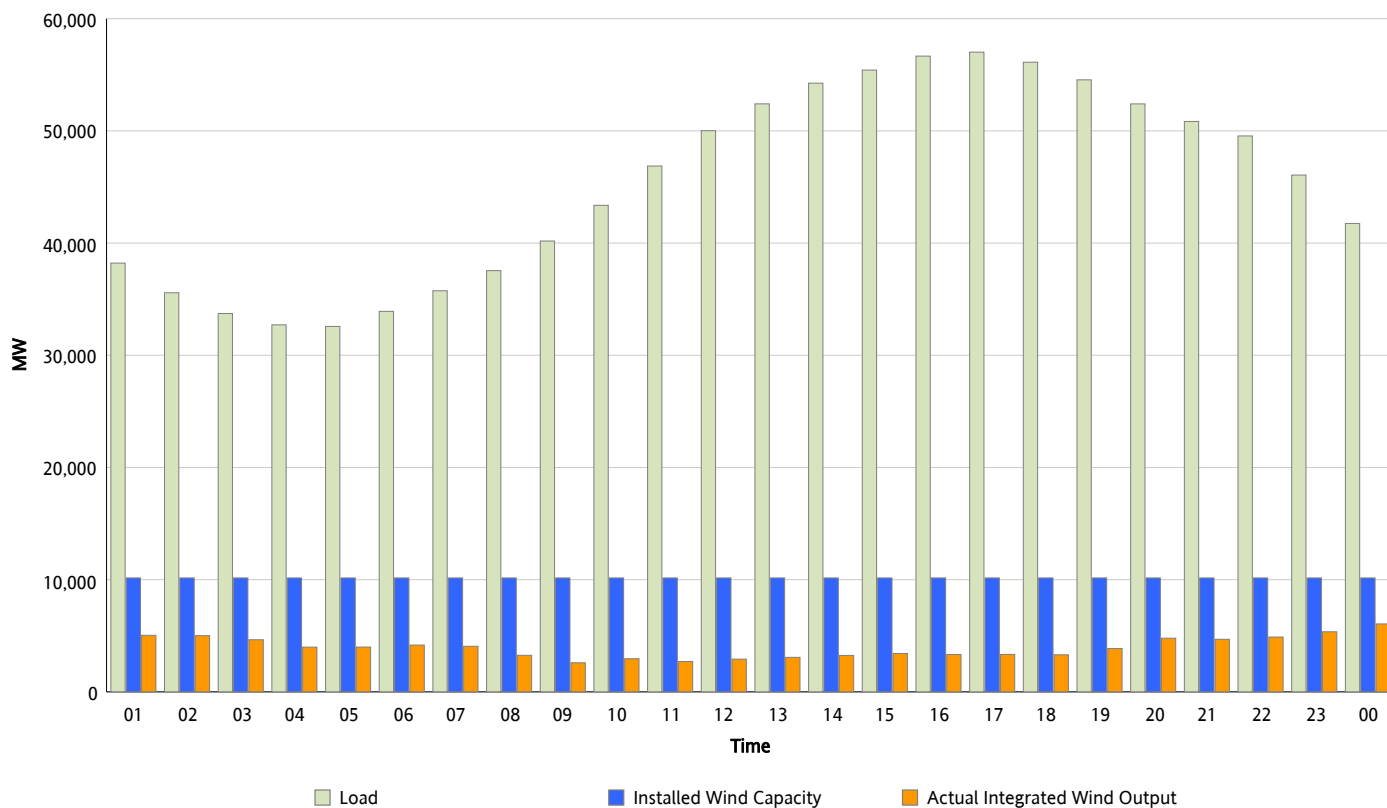


ERCOT Grid Operations

Wind Integration Report : 06/11/2013

Peak Load	57,020 MW
Load Peak Hour (HE)	17
Wind Over Peak	3,331 MW
Wind Record 05/02/13	9,674 MW
Max Wind Value*	6,210 MW
Wind Peak Time	23:33
Wind Integration %	14.88 %

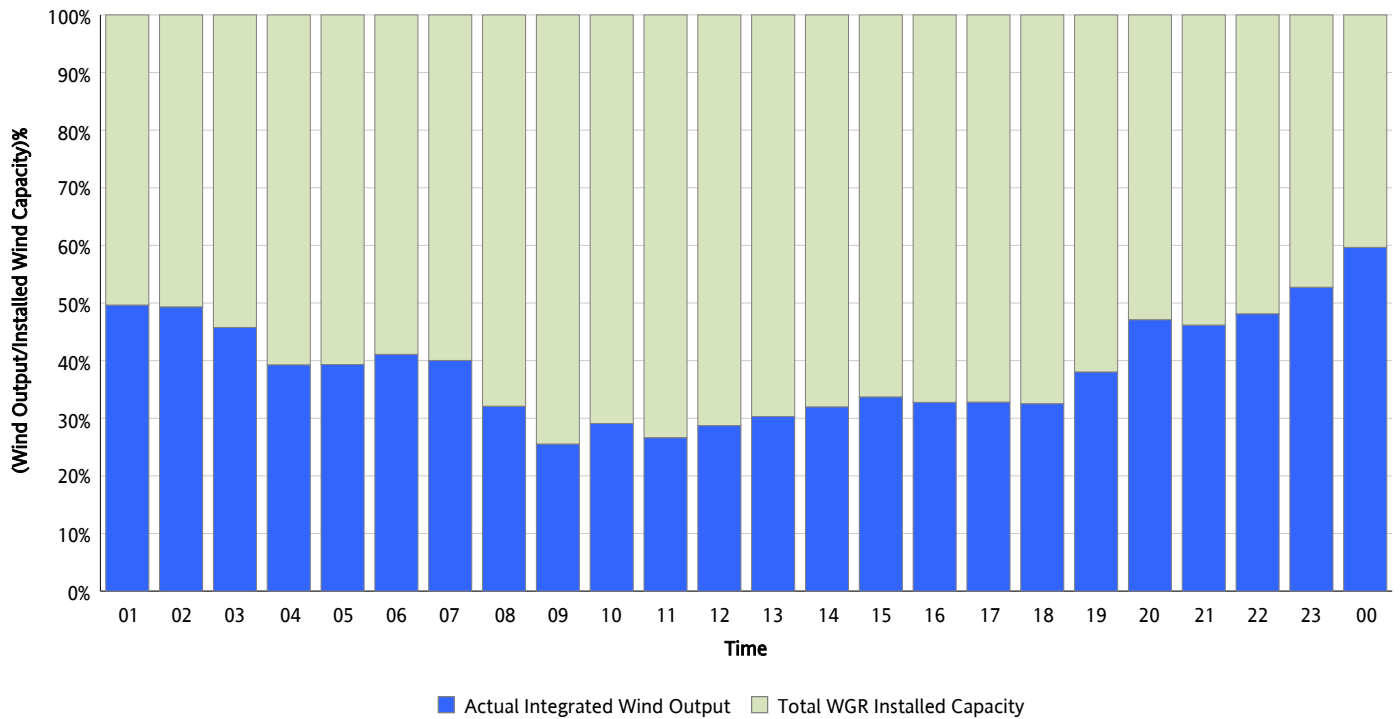
Hourly Average Actual Load vs. Actual Wind Output
06/11/2013



* Wind Record and Wind Max represent instantaneous values and the rest of the values are integrated over the hour

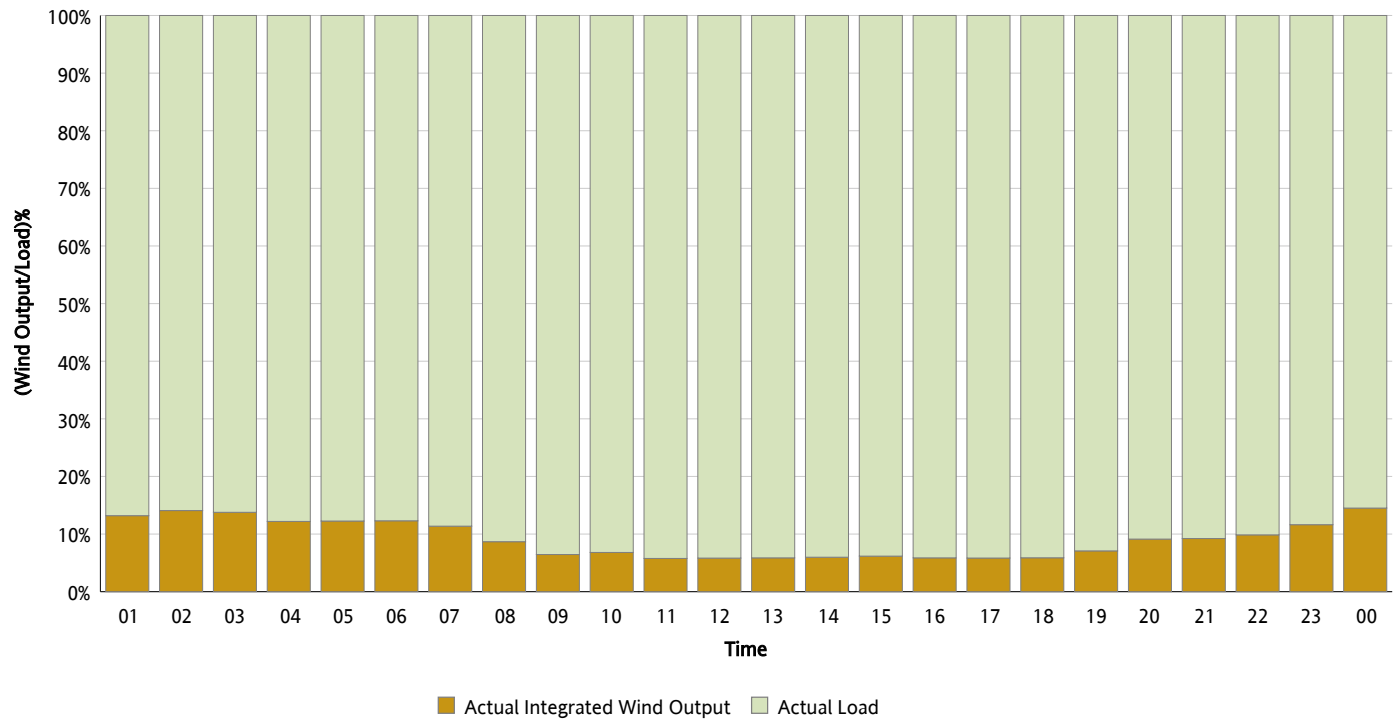
Actual Wind Output as a Percentage of the Total Installed Wind Capacity

06/11/2013



Actual Wind Output as a Percentage of the ERCOT Load

06/11/2013



ERCOT Load vs. Actual Wind Output

06/04/2013 - 06/11/2013

